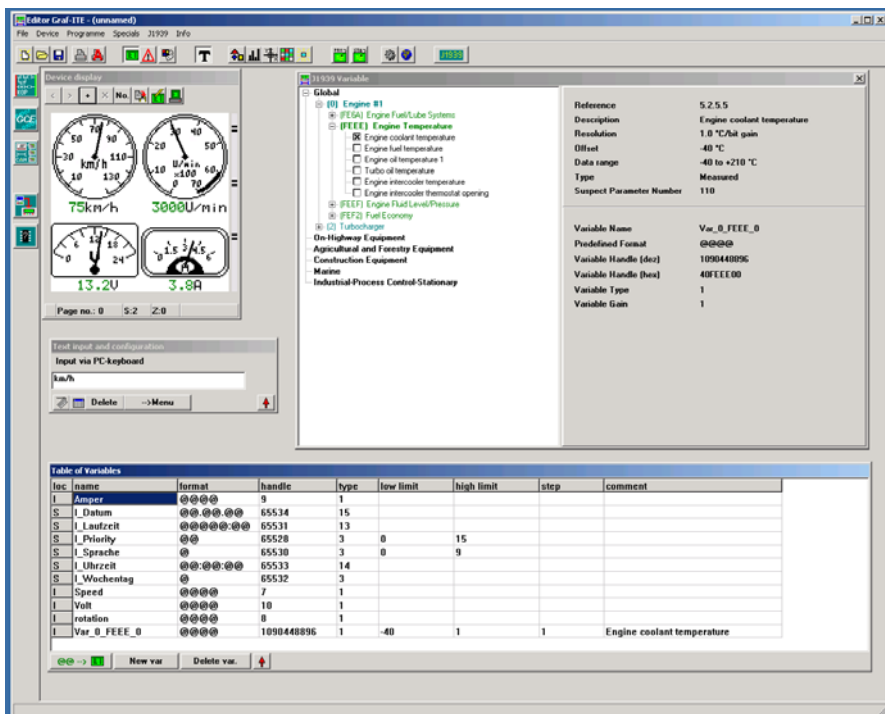




J1939 configuration software ITE6E19

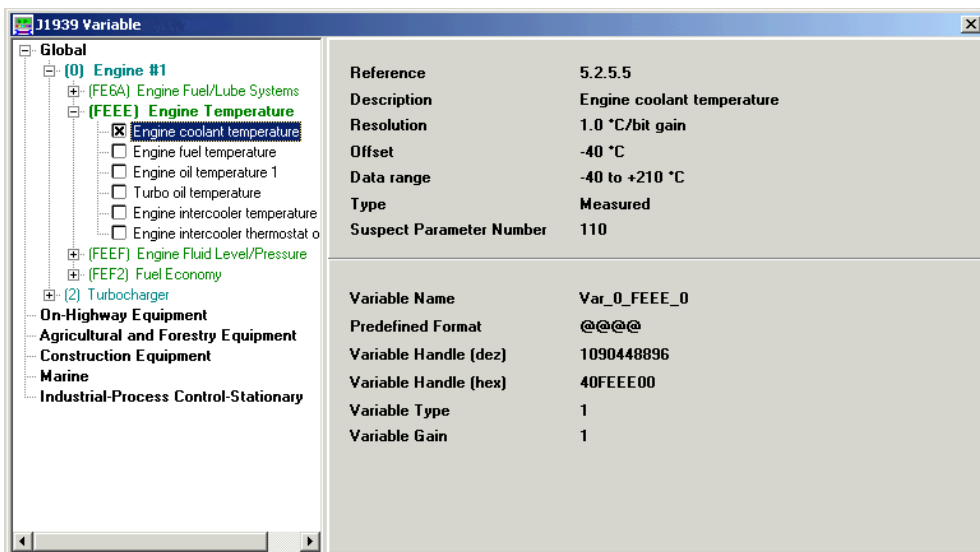


Total view of the editor with the variable table, J1939-menu and the display

J1939-Configurations software ITE6E18 gives total view of the editor with J1939-connection, table of variables and equipment representation and can be used within minutes.

With the help of the configuration software the necessary telegrams can be selected by Mouse-click, with table of variables well-known into program are then taken over. The appropriate variable is then integrated and represented simply like every other variable in the display. For the access to appropriate minutes the J1939-Protokoll is available in three structures. It is possible to have whole groups, example engine #1 to select on all parameters of the engines. Likewise one can place individual telegrams from different components (engine, transmission, brakes.) together and have separate indication.

With the J1939-protocol the user has access to all standard data in the J1939, which are defined. By simple use of the PGN's, the user can receive further information selects. The data are transferred automatically to the table of variables and can without further programming be displayed, a direct indicated of the configuration software represent thus being effective software for the organization of vehicle instruments. Together with control devices of the RK series, the user has the possibility to represent the J1939-Protocol comfortably



J1939-menue

the process data of the vehicle. The free programming of the control units makes it possible to represent process data (engine, transmission...) with data of a control and of additional CAN modules. Open for the technical designer giving new innovative possibilities cost-optimised vehicle designers.

H081A2