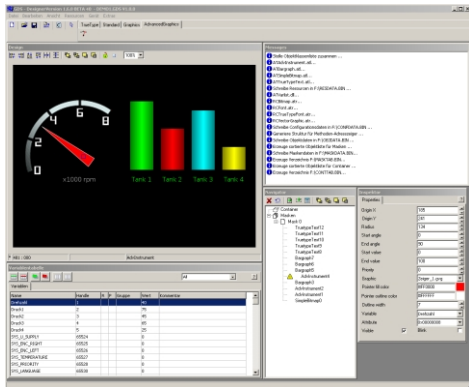
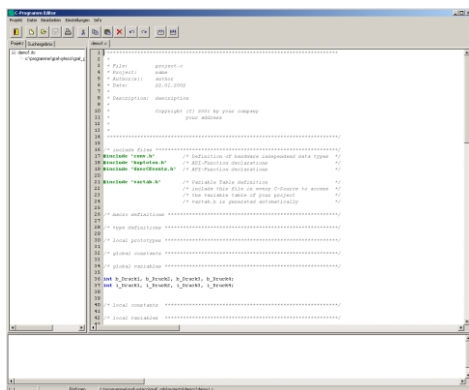


GDSLogic



GDSDesigner



GDSCEdit

## Development with GRAFDesignStudio GDS

### GDS package

GDS is an integrated application development system consisting of graphic tools for project planning of all operator panels from MCP series. GDS contains the programs GDSLogic, GDSDesigner and GDSCEdit.

### GDSLogic

GDSLogic enables the model-driven and graphic project planning of control tasks. GDSLogic covers a wide range of functions, beginning with simple logic compositions, arithmetic problems up to feedback control problems. Complex control procedures are also realizable.

### GDSDesigner

GDSDesigner presents a comfortable way of developing the visualization for the control panels from MCP series. For this purpose GDSDesigner already offers a selection of objects. The system is designed modularly, so it can be extended with additional visual objects. Customized visual display objects are realizable on request. When designing the templates of the project the monitor presentation already corresponds to the presentation on the display of the device later. For the creation of graphics any external graphical software can be directly started out of the editor.

### GDSCEdit

The GDS package includes an "C"- editor to program simple control tasks in language "C". For application of integrated operating system functions a comfortable application interface is available.

### Interface between all programs

Variables serve as interface for data exchange between the projected control task with GDSLogic and the visualization created with GDSDesigner. The management of variables includes a grouping function and the possibility of saving parameter values which can be recalled on the operator panel at runtime.

### Interface to the device

The complete project can be transferred to the device via a standard USB stick. (industrial-suited USB sticks are available on request)

GDSDesigner and GDSCEdit are free and include all functions for setting up and projecting the operator panel.

### System requirements

Windows 2000/XP/VISTA